



E180
User Manual

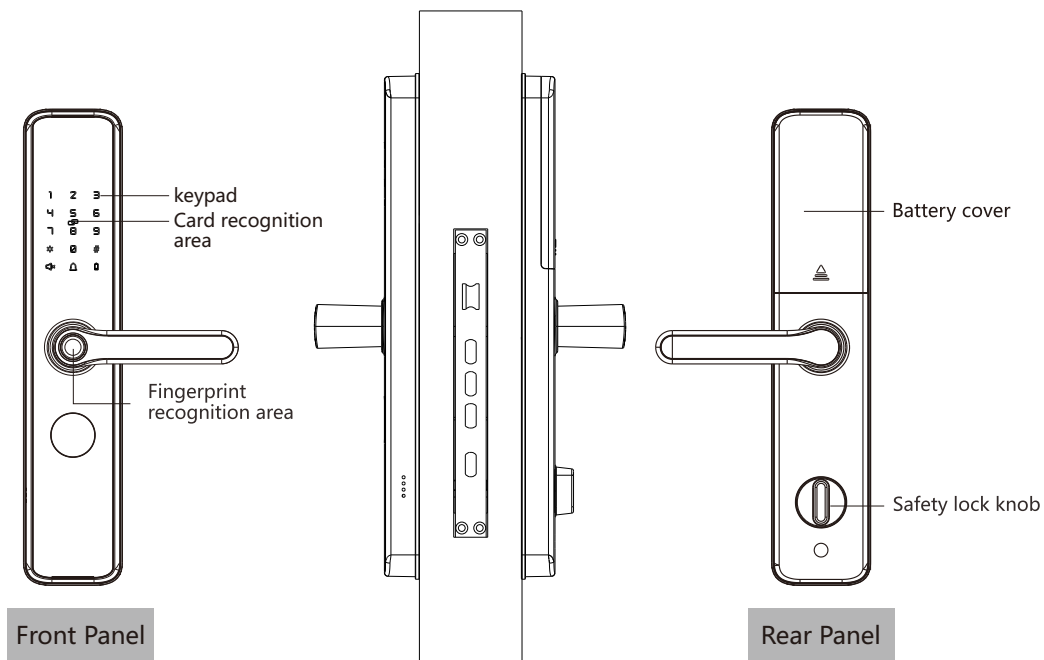
1 Instructions For Use And Product Drawings

Dear user, hello! Thank you for using this smart lock. Before installing and using this product, please carefully check the product list, read the installation instructions, and install the product according to these installation instructions. Our company will not be responsible for any direct or indirect product problems, as well as other hazards and losses caused by not following these installation instructions.

△Important note: Based on the specific model of the product, read and set the corresponding functions.

1. Storage capacity: Card, password, fingerprint three kinds of 160
2. When there is a low voltage alarm, please replace the same type of battery in a timely manner and pay attention to the installation of the positive and negative poles to ensure the normal use of the lock. (Note: New and old batteries cannot be mixed.)
3. If not in use for a long time or just in case, please carry the mechanical key with you and do not leave it indoors.

Product Figure



2 Product List / Installation Exploded Diagram

Please check carefully according to the following list after unpacking the package.
If you find any missing, please contract us or the agent in time.

	Name	Quantity	For note
1	Outer panel (including silicone pad)	1	
2	Rear panel (including silicone pad)	1	
3	IC card	2	
4	Installation accessories package	1	
5	User's manual	1	
6	Certification	1	
7	Lock core package	1	Including keyx2, lock corex1

1.Outer panel components

2.Fixed solenoid (2 pieces)

3.Standard lock case

4.Square shaft (1 pcs)

5.Rear panel components

6.Battery compartment

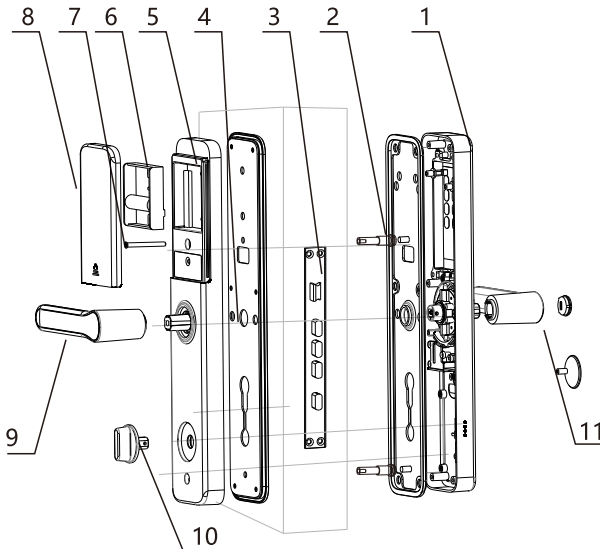
7.Split screw

8.Battery cover

9.Rear handle

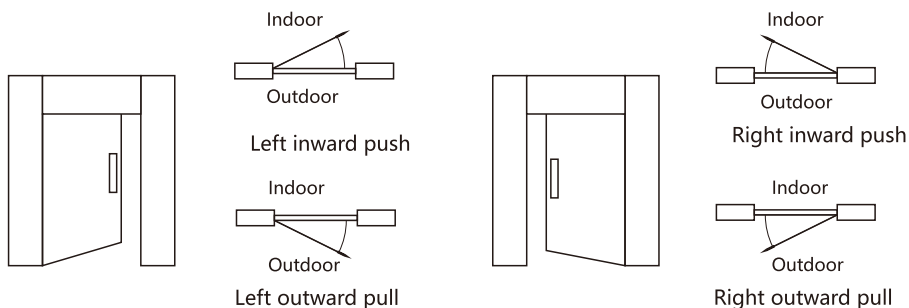
10.Safety Tongue Paddle

11. Front handle



3 Notice Before Installation

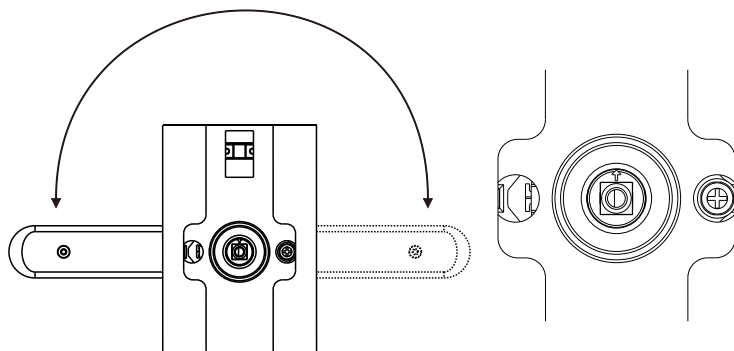
- 3.1** Please confirm the type of opening door before installation. The smart lock can be applied to four types of open doors: left pull, left push, right pull, right push.



- 3.2** Turn the hand side to side
Please press the opening direction of the door to select the handle.

Steps:

1. Remove the pan head screws.
2. Rotate the handle to the desired direction.
3. Install the removed screws back.
4. When installing, the arrow is upward.

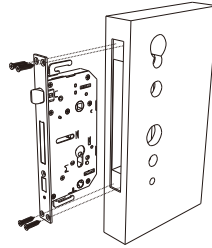


Pay attention

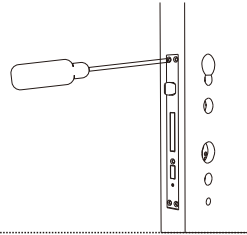
1. Select spare parts of different sizes according to the thickness of the door
2. The spare parts pack with default factory configuration is suitable for 45~120 doors thick, if it is other specifications, please contact us.

4 Installation Steps

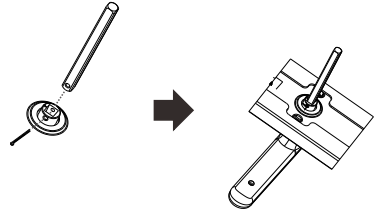
- 4.1 Open the holes on the door according to the template, and put the lock body into the door frame.



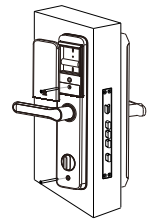
- 4.2 Tighten the four screws on the lock case.



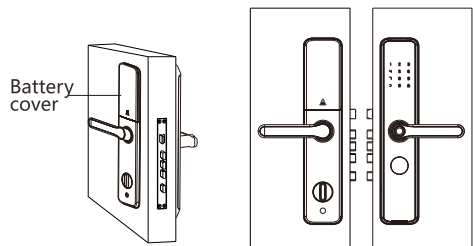
- 4.3 Put the square rod in the clutch, and insert the bolt into the round hole, the bolt opening Bend.



- 4.5 Pass the connecting wire through the crossing port above the door, and insert the square shaft on the outside plate into the square shaft port on the lock body, so that the outside plate is close to the outside of the door. Finally, the connecting line is connected to the rear panel jack, and the rear panel is attached to the door. The pull screw is aligned with the pull screw hole on the inner panel and tightened with the fixing screw.



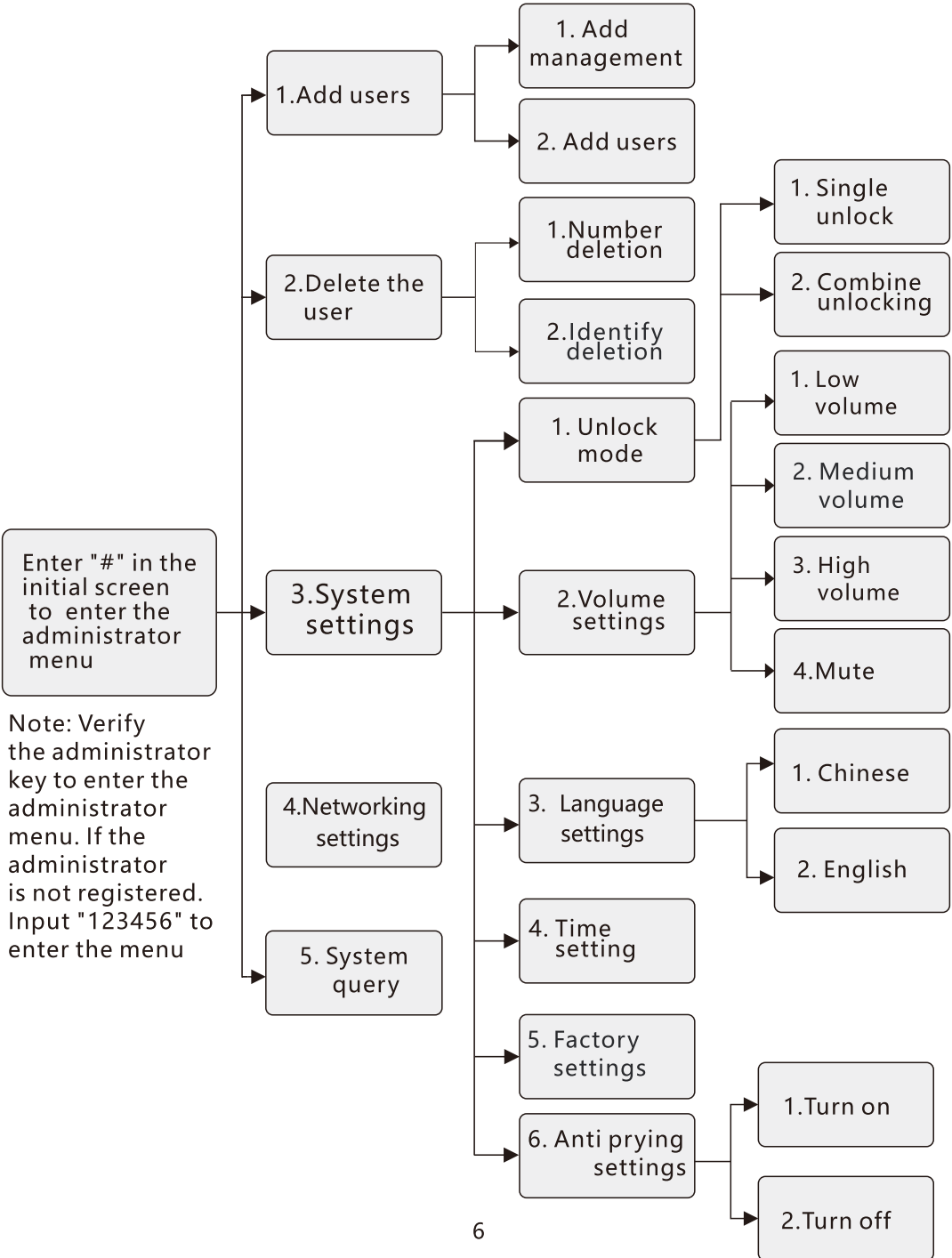
- 4.6 Install the battery, cover the battery cover, and install the side gusset assembly before installing the smart lock. Press down and lift up the inner and outer handles and mechanical keys to check whether



5 Installation Steps

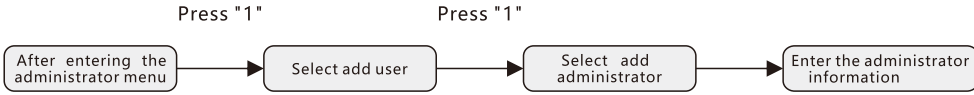
	Parameter	Remarks
Number of users	Administrator: 10 bits Administrator: 501 bits (Fingerprint, password and card are sharing)	Administrator Number: 001-010 Ordinary user number: 011-511 Fingerprints can be recorded in up to 100 groups
Static current	≤65uA	
Dynamic current	< 400mA	
Operating voltage	4.8-6.5V	Operating voltage is less than 4.8±0.2V when unlocking, a low voltage reminder will be broadcast, please pay attention to replace the battery
External power supply	5V~USB	
Working temperature	-25°C~70°C	
Working humidity	45~90%RH	
Password number	6~12 bits	
Virtual password	The total number of virtual password and password is 26 bits	
System lock-in	The system automatically locks after unlocking failure for 5 times	Unlock after 3 minutes of automatic locking
False Accept Rate	< 1%	
False Reject Rate	< 0.001%	
Normally Open Mode	After successfully unlocking the lock, press the "1" key for a long time to enter the normally open mode	

6 Function menu



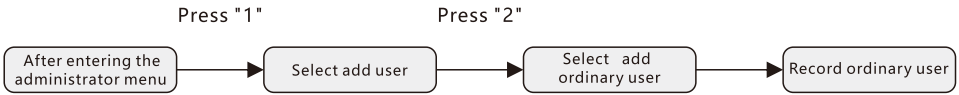
7 User Management

I. Add Administrator



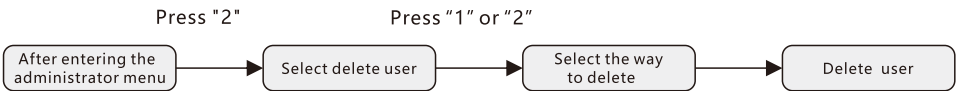
1. Administrator number is: 001-010;
2. The system will automatically register according to the sequence;

II. Add Ordinary Users



1. Ordinary user number: 011-511;
2. The system will automatically register according to the sequence;

III Delete User



1. There are two ways to delete users: Number deletion and Identify deletion
2. Number deletion: Enter the number corresponding to the user to be deleted, such as: 013,
3. Identify deletion: Enter the start information of the user who needs to be deleted, such as: the password of administrator 022,147258. After selecting the identified deletion mode, enter 147258 for deletion administrator 002.
4. The information of administrators and common users can be deleted. For the normal operation of the system, the administrator of this verification cannot delete it get rid of;

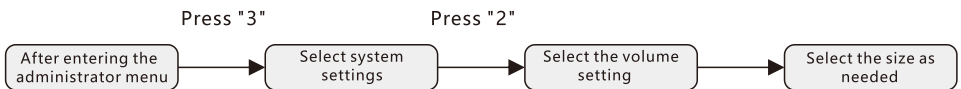
8 System Settings

IV. Lock-mode Setting



1. Unlocking mode has a single unlocking and a combination of unlocking, two unlocking modes;
2. Single unlocking: only need to verify a group of unlocking mode (password / fingerprint or card in any group) to complete the unlocking operation;
3. Combination of unlocking: two groups of passwords (any two groups of password / fingerprint or card) are required to complete the unlocking operation;

V. Volume Settings



1. The system has four modes: high volume, medium volume, low volume and mute. please choose the corresponding volume size according to your individual needs
2. Low volume: After entering this mode, press "1";
3. Medium volume: After entering this mode, press "2"
4. High volume: After entering this mode, press "3";
5. Mute: After entering this mode, press "0", After choosing mute, except to enter the administrator menu, The system will not have a voice broadcast in other cases ;

VI. Language Settings



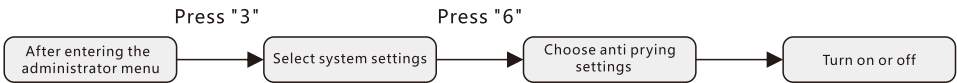
1. The system has both Chinese and English modes. Please choose the language mode according to your individual needs.

VII. Time Settings



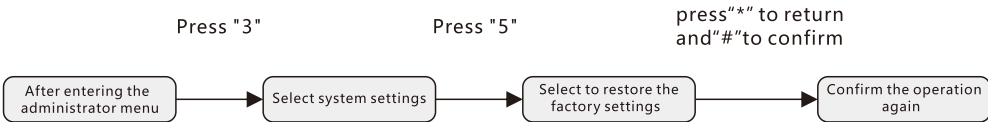
1. This setting is used to set the system time to provide unlocking accurate record and accurate time

VIII. Anti prying settings



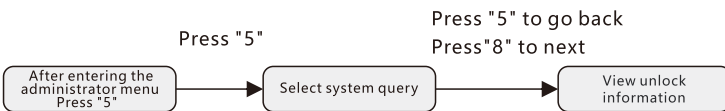
1. This mode can be set up to open, or close the anti prying mode. Please choose according to your personal needs select;

IX. Restore Factory Setting



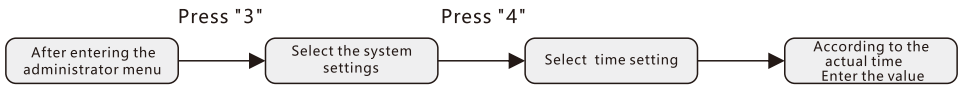
1. The registered administrators and ordinary users in the system will be emptied after restoring the factory Settings;
2. To verify the administrator or unlock the lock again, please enter the initial password "123456" to pass the verification;

X. System Query



1. Before viewing the unlocking information, please set the system time according to the actual time;
2. After entering the setting, the system will automatically play the unlocking record back, and press "*" to exit;

9 Networking Settings



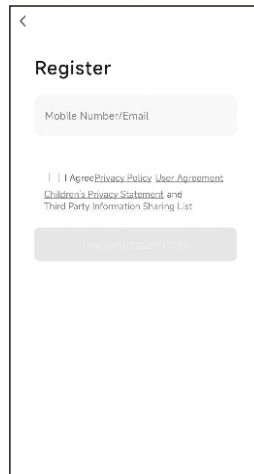
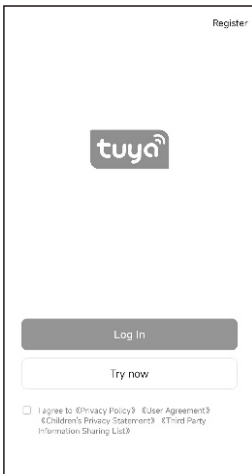
10 TUYA APP Networking (Optional)

8.1 Download TUYA APP

Search for "Doodle Smart" in the Apple App Store or android market and download the App



8.2 Registered account

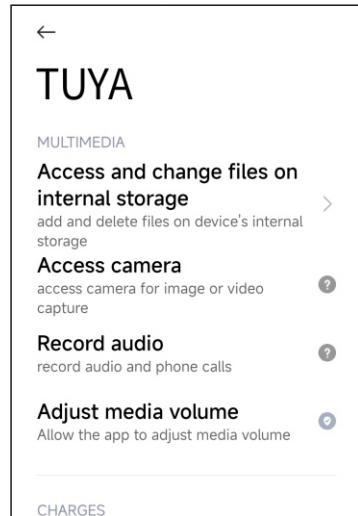
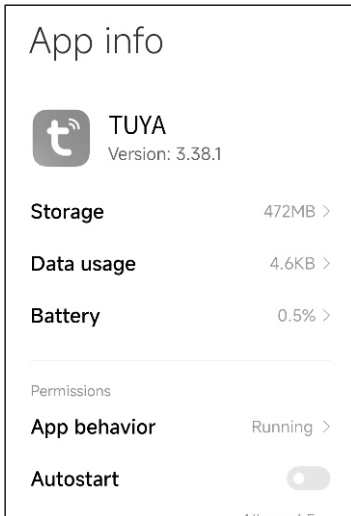


11 TUYA APP Networking (Optional)

1. Click "Register", the privacy policy page of The Doodle Smart platform will pop up. After reading and agreeing, the account registration page will be entered.

2. You can register by email or mobile phone number. The country/region will follow the setting of the mobile phone system, or you can manually change the country/region (the country/region cannot be changed after the registration is completed). After entering your mobile phone number or email address, click Obtain verification code.

3. After entering the received verification code, the page will jump to the password setting page. After setting the password according to the instructions below, click "Finish" to complete the registration (WiFi and Bluetooth must be enabled during operation).



Open the application permissions, skip to the second image, permissions are all designed to allow

13 TUYA APP Networking (Optional)

2. Connect it to jump to the interface as shown in the first. At this time, click the number 7 in the lock system Settings (how to enter the system is explained above) to enter the cat's eye network, click the # key to confirm, and click 1 to enter the network.

Click the first page to connect, jump to the next interface, click the second page, at this time put the mobile phone 10-20cm away from the lock, wait for the system to automatically connect (the connection time depends on the Internet speed at home), after connecting, automatically jump to the fourth interface, click the upper right corner to finish.

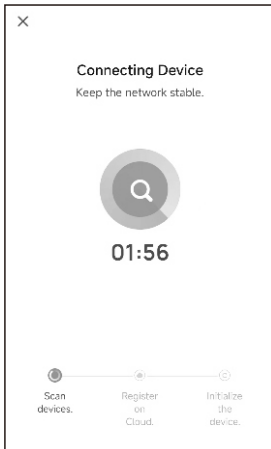


Figure 6

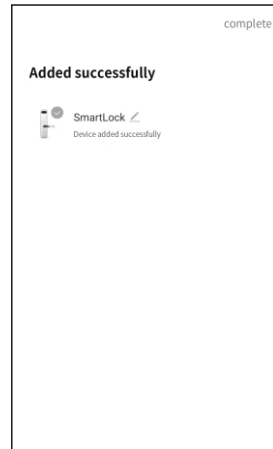


Figure 7

14 Warranty Card

Warranty

1. One year free warranty since the date of purchase. If the warranty card and valid purchase certificate cannot be provided, or the purchase certificate has been tampered with, the warranty period shall start three months from the date of production of the airframe.
2. During the warranty period, under the condition of normal use according to the operation manual, the product defects (determined by the company's official staff); Repairs are made free of charge.
3. During the warranty period, the following conditions will not be repaired free of charge:
 - Artificial damage caused by improper use, such as improper parts, improper installation, failure to use in accordance with the instructions, misuse or negligence caused by damage, etc. Damage caused by transportation and other accidents. Repair and modification not approved by the company. Other damage caused by force majeure (such as natural disaster, abnormal voltage, etc.).
 - Normal use of the product caused by aging, wear and tear, but does not affect the normal use of the product.
4. The appearance of the product is damaged by artificial scratches, fragile and consumable products and not within the scope of warranty, such as batteries.

Product model

Activation code

Dealer name

Purchase date

User name

Address of the user

Phone

Invoice no.

You phone

